

# EYE BOLTS, U-BOLTS & ANCHORS



**EYE BOLT**



**ANCHOR BOLT**



**RF5290**



**DROP IN ANCHOR**



**U-BOLT TURNED**



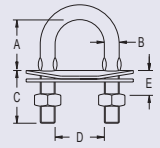
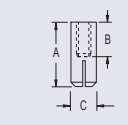
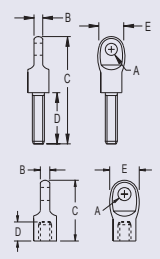
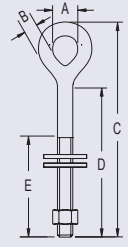
**U-BOLT CRIMPED**

All eye bolts are supplied complete with a nut and washer.  
U-bolts are supplied with top plate, backing plate and nuts.

\*RF5280 anchor bolt includes nut and washer.  
\*\*RF5266 Drop-In anchor suits RF5272 Anchor Bolts

**MATERIALS**  
▶ Grade 316 Stainless Steel

PRODUCT No	THREAD TYPE	A mm	(in.)	B mm	(in.)	C mm	(in.)	D mm	(in.)	E mm	(in.)	WEIGHT g	(oz)
<b>Eye Bolts</b>													
RF156	3/16 BSW	10	(13/32)	4.0	(5/32)	76	(3)	51	(2)	38	(1 1/2)	10	(0.4)
RF157	3/16 BSW	10	(13/32)	4.0	(5/32)	100	(4)	75	(3)	51	(2)	15	(0.5)
RF159	1/4 BSW	12	(15/32)	5.5	(7/32)	81	(3 3/16)	51	(2)	38	(1 1/2)	25	(0.9)
RF160	1/4 BSW	12	(15/32)	5.5	(7/32)	108	(4 1/4)	76	(3)	51	(2)	30	(1.1)
RF161	1/4 BSW	12	(15/32)	5.5	(7/32)	132	(5 3/16)	102	(4)	51	(2)	35	(1.2)
RF162	1/4 BSW	12	(15/32)	5.5	(7/32)	160	(6 5/16)	127	(5)	51	(2)	40	(1.4)
RF163	1/4 BSW	12	(15/32)	5.5	(7/32)	180	(7)	152	(6)	51	(2)	50	(1.8)
RF164	5/16 BSW	13	(1/2)	7.0	(9/32)	111	(4 3/8)	76	(3)	51	(2)	60	(2.1)
RF165	5/16 BSW	13	(1/2)	7.0	(9/32)	139	(5 1/3)	102	(4)	51	(2)	65	(2.3)
RF166	5/16 BSW	13	(1/2)	7.0	(9/32)	162	(6 3/8)	127	(5)	51	(2)	75	(2.7)
RF167	5/16 BSW	13	(1/2)	7.0	(9/32)	187	(7 3/8)	152	(6)	51	(2)	80	(2.8)
RF168	3/8 BSW	17	(21/32)	8.5	(11/32)	116	(4 1/2)	76	(3)	51	(2)	80	(2.8)
RF169	3/8 BSW	17	(21/32)	8.5	(11/32)	140	(5 1/2)	102	(4)	51	(2)	90	(3.2)
RF170	3/8 BSW	17	(21/32)	8.5	(11/32)	167	(6 5/8)	127	(5)	51	(2)	100	(3.5)
RF171	3/8 BSW	17	(21/32)	8.5	(11/32)	193	(7 5/8)	152	(6)	51	(2)	110	(3.9)
<b>Anchor Bolts &amp; Nut</b>													
RF5270	1/4 UNF	6.4	(1/4)	4.8	(3/16)	47.0	(1 7/8)	27	(1 1/16)	14.4	(9/16)	19	(0.7)
RF5271	1/4 UNF	6.4	(1/4)	4.8	(3/16)	76.0	(3)	54	(2 1/8)	14.4	(9/16)	27	(1.0)
RF5272	M6	6.1	(1/4)	4.8	(3/16)	38.5	(1 1/2)	9	(3/8)	14.4	(9/16)	18	(0.6)
RF5280*	1/4 UNF	6.4	(1/4)	4.8	(3/16)	47.0	(1 7/8)	27	(1 1/16)	14.4	(9/16)	26	(0.9)
RF5290	1/4 UNF	6.4	(1/4)	4.8	(3/16)	22.5	(7/8)	8	(5/16)	14.4	(9/16)	12	(0.4)
<b>Drop in Anchors</b>													
RF5266	M6	30	(1 3/16)	28	(1 1/8)	10	(3/8)	8	(5/16)	70	(2.5)		
RF5288	M8	36	(1 13/32)	36	(1 13/32)	12	(1/2)	10	(3/8)	95	(3.4)		
<b>U-Bolt – Turned</b>													
RF559	1/4 UNC	24	(15/16)	8.0	(5/16)	38	(1 1/2)	19.0	(3/4)	6	(1/4)	70	(2.5)
RF543	5/16 UNC	28	(1 1/8)	9.5	(3/8)	25	(1)	25.5	(1)	4	(5/32)	95	(3.4)
RF541	5/16 UNC	28	(1 1/8)	9.5	(3/8)	38	(1 1/2)	25.5	(1)	8	(5/16)	105	(3.7)
RF544	5/16 UNC	28	(1 1/8)	9.5	(3/8)	51	(2)	25.5	(1)	6	(1/4)	110	(3.9)
RF547	5/16 UNC	28	(1 1/8)	9.5	(3/8)	77	(3)	25.5	(1)	32	(1 1/4)	130	(4.6)
RF548	5/16 UNC	28	(1 1/8)	9.5	(3/8)	103	(4)	25.5	(1)	58	(2 9/32)	150	(5.3)
RF549	5/16 UNC	28	(1 1/8)	9.5	(3/8)	127	(5)	25.5	(1)	71	(2 13/16)	170	(6.0)
<b>U-Bolt – Crimped</b>													
RF1344	1/2 UNF	43	(1 11/16)	11.8	(15/32)	76	(3)	34	(1 5/16)	30	(1 3/16)	325	(11.5)
RF1345	1/2 UNF	43	(1 11/16)	11.8	(15/32)	102	(4)	34	(1 5/16)	57	(2 1/4)	370	(13.1)
RF1346	1/2 UNF	43	(1 11/16)	11.8	(15/32)	127	(5)	34	(1 5/16)	82	(3 1/4)	495	(17.5)





Ronstan pad eyes and saddles suit a range of load requirements. They are available in bolt-through or bolt/screw-down styles, and some are supplied with mounting pads to protect surfaces and facilitate sealing.

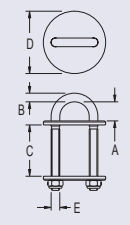
Saddles are convenient for attaching cable end fittings. Standard, flared and ferrule versions are available in a range of sizes.

Note: RF2431-06 and RF2431-08 have U.N.C. threads.

**MATERIALS**

- ▶ Grade 316 Stainless Steel
- ▶ Grade 17-4PH Stainless Steel (RF2429)

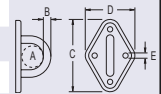
PRODUCT No.	A		B		C		D		E		B.L.		WEIGHT	
	mm	(in.)	mm	(in.)	mm	(in.)	mm	(in.)	mm	(in.)	kg	(lb)	g	(oz)
<b>Pad Eyes – Round Base</b>														
RF2430-06	16	(5/8)	6.4	(1/4)	–	–	51	(2)	6.5	(1/4)	–	–	124	(4.4)
RF2430-08	16	(5/8)	7.9	(5/16)	–	–	57	(2 1/4)	8.0	(5/16)	–	–	127	(4.5)
RF2431-06	16	(5/8)	6.4	(1/4)	42	(1 5/8)	51	(2)	6.4	(1/4)	–	–	130	(4.6)
RF2431-08	16	(5/8)	7.9	(5/16)	45	(1 3/4)	57	(2 1/4)	7.9	(5/16)	–	–	223	(7.7)
RF2429*	19	(3/4)	10.0	(13/32)	–	–	71	(2 13/16)	8.0	(5/16)	9000	(19800)	220	(7.8)



\* Supplied with a neoprene mounting pad

**Pad Eyes – Diamond Base**

RF87	10	(13/32)	5.0	(3/16)	52	(2 1/16)	20	(13/16)	5.0	(3/16)	400	(880)	15	(0.5)
RF416	25	(1)	6.4	(1/4)	83	(3 1/4)	35	(1 3/8)	4.8	(3/16)	800	(1760)	40	(1.4)
RF415 ◊	21	(13/16)	8.0	(5/16)	75	(3)	51	(2)	5.0	(3/16)	1000	(2200)	75	(2.7)
RF529**◊	18	(23/32)	8.0	(5/16)	75	(3)	51	(2)	6.4	(1/4)	–	–	100	(4.0)
RF44 ◊	22	(7/8)	11.0	(7/16)	94	(3 11/16)	60	(2 3/8)	6.7	(1/4)	2000	(4400)	130	(4.6)



\*\* Turned U-Bolt with a pad eye base. Thread size is 6.4mm (1/4" UNC). 'C' dimension is 22mm (7/8")

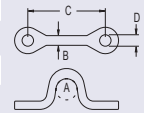
◊ Supplied with a nylon mounting pad

PRODUCT No.	A		B		C		D		WEIGHT	
	mm	(in.)	mm	(in.)	mm	(in.)	mm	(in.)	g	(oz)
<b>Saddles – Narrow</b>										
RF498	10.0	(3/8)	3.5	(1/8)	27.0	(1 1/16)	4.0	(5/32)	4	(0.1)
RF134	14.0	(9/16)	4.8	(3/16)	36.5	(1 7/16)	5.0	(3/16)	5	(0.2)
RF134A***	14.0	(9/16)	4.8	(3/16)	36.5	(1 7/16)	5.0	(3/16)	5	(0.2)
RF1055	16.0	(5/8)	7.0	(1/4)	45.0	(1 3/4)	6.0	(1/4)	15	(0.5)
RF1054	18.0	(11/16)	5.5	(3/16)	60.0	(2 3/8)	8.0	(5/16)	35	(1.2)
RF528	12.0	(15/32)	7.0	(1/4)	44.0	(1 3/4)	8.0	(5/16)	25	(0.9)

\*\*\* Has countersunk fastening holes

**Saddles – Ferrule Eye**

RF499	8.0	(5/16)	4.0	(5/32)	28.0	(1 1/8)	4.0	(5/32)	4	(0.1)
RF1058	10.0	(13/32)	5.0	(3/16)	36.0	(1 7/16)	5.0	(3/16)	9	(0.3)
RF1057	12.5	(1/2)	6.0	(1/4)	45.0	(1 3/4)	6.0	(1/4)	18	(0.6)
RF1056	16.0	(5/8)	8.0	(15/16)	60.0	(2 3/8)	8.0	(5/16)	40	(1.4)



**Saddles – Flared Top**

RF94	6.0	(1/4)	9.0	(3/8)	27.5	(1 1/16)	5.0	(3/16)	3	(0.1)
RF94A	5.0	(3/16)	6.0	(1/4)	29.0	(1 1/8)	5.0	(3/16)	3	(0.1)
RF95	15.0	(9/16)	12.5	(1/2)	38.0	(1 1/2)	5.0	(3/16)	8	(0.3)
RF148	15.0	(9/16)	12.0	(1/2)	41.0	(1 5/8)	6.0	(1/4)	8	(0.3)
RF291	13.0	(1/2)	9.0	(3/8)	32.0	(1 1/4)	5.0	(3/16)	7	(0.2)
RF1050	8.0	(5/16)	9.0	(3/8)	–	–	5.0	(3/16)	6	(0.2)
RF1059	19.0	(3/4)	14.0	(9/16)	51.0	(2)	6.5	(1/4)	11	(0.4)
RF5023	18.0	(13/16)	14.0	(19/16)	50.8	(2)	6.0	(1/4)	11	(0.4)



PRODUCT No.	THREAD TYPE	WIDTH ACROSS FLATS mm (in.)	WIDTH ACROSS CORNERS mm (in.)	THICKNESS mm (in.)	STANDARD	WEIGHT g (oz)
<b>Stainless Steel Hex Nuts</b>						
NS-03	#10-32 UNF	9.5 (3/8)	10.7 (7/16)	3.1 (1/8)	ANSI B18.6.3	1 (0.1)
NS-04	1/4" UNF	11.1 (7/16)	12.7 (1/2)	5.6 (7/32)	ANSI B18.6.3	3 (0.1)
NS-05	5/16" UNF	12.7 (1/2)	14.3 (9/16)	6.7 (9/32)	ANSI B18.2.2	5 (0.2)
NS-06	3/8" UNF	14.3 (9/16)	17.5 (11/16)	8.3 (10/32)	ANSI B18.2.2	6 (0.2)
NS-08	1/2" UNF	19.0 (3/4)	22.2 (7/8)	11.1 (7/16)	ANSI B18.2.2	17 (0.6)
NS-10	5/8" UNF	23.8 (15/16)	25.4 (1)	13.9 (9/16)	ANSI B18.2.2	34 (1.2)
NS-12	3/4" UNF	28.6 (1 1/8)	33.3 (1 5/16)	16.3 (5/8)	ANSI B18.2.2	54 (1.9)
NS-14	7/8" UNF	33.3 (1 5/16)	38.1 (1 1/2)	19.0 (3/4)	ANSI B18.2.2	85 (3.0)
NS-16	1" UNF	38.1 (1 1/2)	44.5 (1 3/4)	21.8 (7/8)	ANSI B18.2.2	128 (4.5)
NS-20	1 1/4" UNF	47.6 (1 7/8)	55.6 (2 3/16)	27.0 (1 1/16)	ANSI B18.2.2	260 (9.2)
NS-22	1 3/8" UNF	52.4 (2 1/16)	60.3 (2 3/8)	29.8 (1 5/32)	ANSI B18.2.2	450 (15.8)

PRODUCT No.	THREAD TYPE	FINISH	STANDARD	WEIGHT g (oz)
<b>Brass Hex Nuts</b>				
NB-03	#10-32 UNF	Nickel Plated	ANSI B18.2.2	1 (0.1)
NB-04	1/4" UNF	Nickel Plated	ANSI B18.2.2	3 (0.1)
NB-05	5/16" UNF	Nickel Plated	ANSI B18.2.2	5 (0.2)
NB-06	3/8" UNF	Nickel Plated	ANSI B18.2.2	8 (0.3)
NB-08	1/2" UNF	Chrome Plated	ANSI B18.2.2	19 (0.7)
NB-10	5/8" UNF	Chrome Plated	ANSI B18.2.2	36 (1.3)
NB-12	3/4" UNF	Chrome Plated	ANSI B18.2.2	60 (2.1)
NB-14	7/8" UNF	Chrome Plated	ANSI B18.2.2	98 (3.4)
NB-16	1" UNF	Chrome Plated	ANSI B18.2.2	145 (5.1)
NB-20	1 1/4" UNF	Chrome Plated	ANSI B18.2.2	266 (9.4)
NB-22	1 3/8" UNF	Chrome Plated	ANSI B18.2.2	180 (16.9)

PRODUCT No.	I.D. mm (in.)	O.D. mm (in.)	THICKNESS mm (guage)	WEIGHT g (oz)
<b>Stainless Steel Flat Washers</b>				
WS-03	4.8 (3/16")	11.1 (7/16")	0.9 20g	1 (0.1)
WS-04	6.4 (1/4")	14.3 (9/16")	1.2 18g	1 (0.1)
WS-05	8.0 (5/16")	16.0 (5/8")	1.2 18g	1 (0.1)
WS-06	9.5 (3/8")	19.0 (3/4")	1.2 18g	2 (0.1)
WS-08	12.7 (1/2")	25.4 (1")	2.0 14g	5 (0.2)
WS-10	16.0 (5/8")	38.0 (1 1/2")	2.0 14g	13 (0.5)
WS-12	19.0 (3/4")	38.0 (1 1/2")	2.0 14g	12 (0.4)
WS-14	22.2 (7/8")	41.3 (1 5/8")	3.0 10g	23 (0.8)
WS-16	25.4 (1")	47.6 (1 7/8")	2.0 14g	20 (0.7)
WS-20	31.8 (1 1/4")	70.0 (2 3/4")	3.0 10g	73 (2.6)
WS-22	36.0 (1 7/16")	66.0 (2 5/8")	5.0 -	80 (2.8)



PRODUCT No.	DESCRIPTION	A		B		SUITS CLEVIS PINS		WEIGHT	
		mm	(in.)	mm	(in.)			g	(oz)
<b>Split Rings and Clips</b>									
RF113	Split ring	9.5	(3/8)	1.0	(1/32)	RF258 – RF266		1	(0.1)
RF114	Split ring	11.1	(7/16)	1.3	(1/16)	RF260 – RF266		2	(0.1)
RF413	Clip	16.0	(5/8)	2.7	(3/32)	RF267 – RF274		3	(0.1)
RF686	Split ring	14.3	(9/16)	1.3	(1/16)	RF260 – RF274		4	(0.1)
RF687	Split ring	18.8	(3/4)	1.6	(1/16)	RF260 – RF274		5	(0.2)
RF688	Split ring	25.0	(1)	2.0	(3/32)	RF267 – RF278		5	(0.2)

	A		B		C		D		E		WEIGHT	
	mm	(in.)	mm	(in.)	mm	(in.)	mm	(in.)	mm	(in.)	g	(oz)
<b>Clevis Pins</b>												
RF258	3.9	(5/32)	9.1	(11/32)	13.1	(1/2)	6.4	(1/4)	2.0	(5/64)	1	(0.1)
RF259	4.6	(3/16)	9.0	(11/32)	12.2	(15/32)	6.4	(1/4)	2.0	(5/64)	2	(0.1)
RF260	4.8	(3/16)	12.7	(1/2)	16.0	(5/8)	6.4	(1/4)	2.2	(3/32)	3	(0.1)
RF261	4.8	(3/16)	19.0	(3/4)	22.0	(7/8)	6.4	(1/4)	2.2	(3/32)	3	(0.1)
RF262	4.8	(3/16)	25.0	(1)	28.0	(1 1/8)	6.4	(1/4)	2.2	(3/32)	5	(0.2)
RF263	6.4	(1/4)	12.7	(1/2)	16.5	(21/32)	7.9	(5/16)	2.4	(3/32)	5	(0.2)
RF264	6.4	(1/4)	19.0	(3/4)	23.0	(29/32)	7.9	(5/16)	2.4	(3/32)	5	(0.2)
RF265	6.4	(1/4)	25.0	(1)	30.0	(1 3/16)	7.9	(5/16)	2.4	(3/32)	10	(0.4)
RF266	6.4	(1/4)	32.0	(1 1/4)	36.0	(1 7/16)	7.9	(5/16)	2.4	(3/32)	10	(0.4)
RF267	7.9	(5/16)	12.7	(1/2)	16.5	(21/32)	9.5	(3/8)	2.7	(3/32)	10	(0.4)
RF268	7.9	(5/16)	19.0	(3/4)	23.0	(29/32)	9.5	(3/8)	2.7	(3/32)	10	(0.4)
RF269	7.9	(5/16)	25.0	(1)	30.0	(1 3/16)	9.5	(3/8)	2.7	(3/32)	10	(0.4)
RF270	7.9	(5/16)	32.0	(1 1/4)	36.0	(1 7/16)	9.5	(3/8)	2.7	(3/32)	15	(0.5)
RF271	9.5	(3/8)	19.0	(3/4)	24.0	(15/16)	12.7	(1/2)	4.0	(5/32)	15	(0.5)
RF272	9.5	(3/8)	25.0	(1)	31.0	(1 1/4)	12.7	(1/2)	3.6	(5/32)	20	(0.7)
RF273	9.5	(3/8)	32.0	(1 1/4)	37.0	(1 7/16)	12.7	(1/2)	3.7	(5/32)	20	(0.7)
RF274	9.5	(3/8)	38.0	(1 1/2)	43.0	(1 11/16)	12.7	(1/2)	3.7	(5/32)	25	(0.9)
RF275	12.7	(1/2)	19.0	(3/4)	25.0	(1)	15.9	(5/8)	3.5	(1/8)	30	(1.1)
RF276	12.7	(1/2)	25.0	(1)	31.0	(1 1/4)	15.9	(5/8)	3.5	(1/8)	35	(1.2)
RF277	12.7	(1/2)	32.0	(1 1/4)	38.0	(1 1/2)	15.9	(5/8)	3.5	(1/8)	40	(1.4)
RF278	12.7	(1/2)	38.0	(1 1/2)	44.0	(1 3/4)	15.9	(5/8)	3.5	(1/8)	50	(1.8)
RF537	15.9	(5/8)	25.0	(1)	33.0	(1 5/16)	19.0	(3/4)	4.0	(5/32)	55	(1.9)
RF538	15.9	(5/8)	32.0	(1 1/4)	38.0	(1 1/2)	19.0	(3/4)	4.4	(5/32)	65	(2.3)
RF539	15.9	(5/8)	38.0	(1 1/2)	45.0	(1 3/4)	19.0	(3/4)	4.4	(5/32)	75	(2.7)

<b>Tamper-Resistant Clevis Pin – Loctite® is recommended with this product.</b>												
	A		B		C		D		E		WEIGHT	
	mm	(in.)	mm	(in.)	mm	(in.)	mm	(in.)	mm	(in.)	g	(oz)
RF5300-03	11.1	(7/16)	6.4	(1/4)	4.6	(3/16)	-	-	-	-	2	(0.1)
RF5300-04	12.5	(1/2)	7.9	(5/16)	6.2	(1/4)	-	-	-	-	4	(0.1)

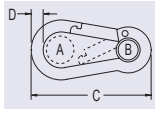
  

<b>Fast Pin</b>												
	A		B		C		D		E		WEIGHT	
	mm	(in.)	mm	(in.)	mm	(in.)	mm	(in.)	mm	(in.)	g	(oz)
RF5310	4.8	(3/16)	12.5	(1/2)	-	-	-	-	-	-	7	(0.2)

<b>Toggle Pins – 'B' is the maximum thickness of material the toggle pin can pass through, allowing correct toggle operation.</b>												
	A		B		C		D		E		WEIGHT	
	mm	(in.)	mm	(in.)	mm	(in.)	mm	(in.)	mm	(in.)	g	(oz)
RF115x1/2	6.4	(1/4)	8.4	(5/16)	12.7	(1/2)	33.0	(1 5/16)	7.9	(5/16)	10	(0.4)
RF115x5/8	6.4	(1/4)	10.5	(13/32)	15.9	(5/8)	36.5	(1 7/16)	7.9	(5/16)	10	(0.4)
RF115x3/4	6.4	(1/4)	14.5	(9/16)	19.0	(3/4)	39.0	(1 9/16)	7.9	(5/16)	10	(0.4)
RF115x1	6.4	(1/4)	20.0	(3/4)	25.4	(1)	45.0	(1 3/4)	7.9	(5/16)	10	(0.4)
RF115x1 1/4	6.4	(1/4)	26.5	(1)	32.0	(1 1/4)	51.5	(2)	7.9	(5/16)	15	(0.5)
RF117x1 1/2	9.5	(3/8)	31.5	(1 1/4)	47.0	(1 3/4)	70.0	(2 15/16)	12.7	(1/2)	35	(1.2)

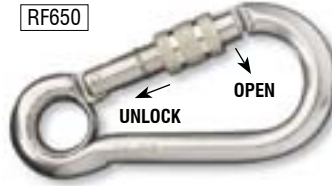
Stainless Steel Hardware



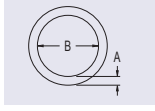
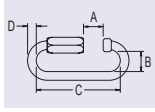
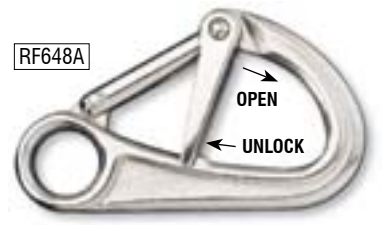
### CARBINE HOOK NON-LOCKING



RF650



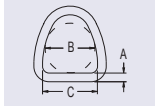
RF648A



### QUICKLINKS



### STAINLESS STEEL RINGS



Carbine hooks are a fast effective means of attachment. They are manufactured from Grade 316 Stainless Steel and are available in several styles.

The RF648A has a spring lever lock for one-handed operation and is frequently used in safety applications.

The RF650 opens inwards and has a threaded locking sleeve for added security.

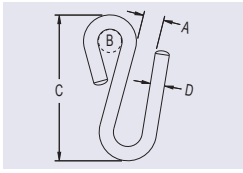
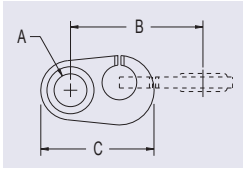
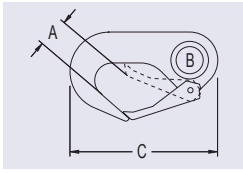
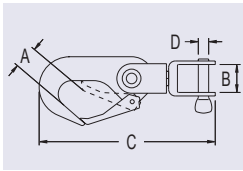
Quicklinks feature large openings and secure, threaded locking sleeves. They are a quick, easy solution for many types of connection.

Welded rings are used as attachments for lines or webbing. The RF16 ring accepts 50mm (2") webbing strap.

#### MATERIALS

► Grade 316 Stainless Steel

PRODUCT No.	A mm	A (in.)	B mm	B (in.)	C mm	C (in.)	D mm	D (in.)	B.L. kg	B.L. (lb)	WEIGHT g	WEIGHT (oz)	
<b>Carbine Hook – Non Locking</b>													
RF2355	17.5	(11/16)	9.0	(11/32)	60	(2 3/8)	6	(1/4)	520	(1145)	28	(1.0)	
RF652	22.5	(7/8)	11.0	(7/16)	80	(3 1/8)	8	(5/16)	800	(1760)	68	(2.4)	
RF653	28.5	(1 1/8)	15.0	(19/32)	100	(3 15/16)	10	(13/32)	1200	(2640)	129	(4.6)	
<b>Carbine Hook – Threaded Locking Sleeve</b>													
RF650	13.0	(17/32)	14.0	(17/32)	100	(3 15/16)	10	(13/32)	1200	(2640)	134	(4.7)	
<b>Carbine Hook – Spring Locking Lever</b>													
RF648A	10.0	(13/32)	17.0	(11/16)	19.7	(3/4)	107	(4 3/16)	1400	(3080)	184	(6.5)	
<b>Quicklinks</b>													
RF711	5.5	(3/16)	11.5	(7/16)	32	(1 1/4)	4	(5/32)	1400	(3085)	12	(0.4)	
RF711L	11.5	(7/16)	11.5	(7/16)	45	(1 3/4)	4	(5/32)	1250	(2755)	15	(0.5)	
RF712	7.5	(5/16)	14.5	(9/16)	45	(1 3/4)	6	(1/4)	3250	(7165)	35	(1.2)	
RF712L	14.5	(9/16)	14.5	(9/16)	59	(2 5/16)	6	(1/4)	2900	(6390)	42	(1.5)	
RF713	11.0	(7/16)	17.5	(11/16)	58	(2 5/16)	8	(5/16)	5500	(12125)	79	(2.7)	
RF713L	16.0	(5/8)	16.5	(5/8)	72	(2 13/16)	8	(5/16)	4900	(10800)	95	(3.3)	
RF714	12.0	(15/32)	20.5	(13/16)	69	(2 11/16)	10	(13/32)	9000	(19840)	140	(4.9)	
RF714L	20.6	(13/16)	20.5	(13/16)	86	(3 3/8)	10	(13/32)	8000	(17635)	160	(5.7)	
<b>Rings – Stainless Steel</b>													
RF122	Round	4	(5/32)	38.0	(1 1/2)	-	-	180	(396)	1100	(2420)	12	(0.4)
RF123	Round	5	(3/16)	25.4	(1)	-	-	600	(1320)	2200	(4840)	14	(0.5)
RF48	Round	6	(1/4)	25.4	(1)	-	-	900	(1980)	3000	(6600)	15	(0.5)
RF124	Round	6	(1/4)	38.0	(1 1/2)	-	-	650	(1430)	3000	(6600)	40	(1.4)
RF125	Round	8	(5/16)	42.5	(1 5/8)	-	-	700	(1540)	3500	(7700)	55	(1.9)
RF16	D-Ring	8	(5/16)	45.0	(1 3/4)	50	(2)	600	(1320)	1200	(2640)	75	(2.7)



RF533

RF532

RF586



RF2665

RF89

RF536



RF50

RF48A

RF49

RF51



Many types of hooks are available to suit a variety of applications where quick attachment or removal is required.

S-hooks feature a closed eye and long return leg to ensure a

positive attachment and avoid accidental release.

Sister clips are a simple, effective means of quickly attaching and detaching ropes.

### MATERIALS

- ▶ Grade 316 Stainless Steel
- ▶ Chrome plated Brass (RF586)
- ▶ Investment cast Stainless Steel, Grade 17-4PH (RF2665)

PRODUCT No.	A		B		C		D		B.L.		WEIGHT	
	mm	(in.)	mm	(in.)	mm	(in.)	mm	(in.)	kg	(lb)	g	(oz)
<b>Hooks – Stainless Steel</b>												
RF532	10.0	(13/32)	12.0	(15/32)	78	(3 1/16)	4.8	(3/16)	360	(790)	40	(1.4)
RF533	10.0	(13/32)	9.0	(11/32)	51	(2)	-	-	360	(790)	25	(0.9)
<b>Hooks – Chrome Plated Brass</b>												
RF586	10.0	(13/32)	10.0	(13/32)	60	(2 3/8)	-	-	750	(1650)	50	(1.8)
<b>Sister Clips</b>												
RF536	7.0	(9/32)	27.0	(1 1/16)	24	(15/16)	-	-	70	(150)	5	(0.2)
RF89	10.0	(13/32)	43.0	(1 11/16)	37	(1 7/16)	-	-	250	(550)	10	(0.4)
RF2665	15.0	(19/32)	60.0	(2 3/8)	58	(2 1/4)	-	-	1800	(3960)	81	(2.9)
<b>S-Hooks</b>												
RF50	10.0	(13/32)	6.8	(1/4)	44	(1 3/4)	4.8	(3/16)	250	(550)	14	(0.5)
RF48A	10.0	(13/32)	9.0	(11/32)	62	(2 7/16)	6.0	(1/4)	400	(880)	35	(1.2)
RF49	12.0	(15/32)	11.0	(7/16)	76	(3)	8.0	(5/16)	600	(1320)	65	(2.3)
RF51	15.0	(19/32)	16.0	(5/8)	87	(3 7/16)	9.5	(3/8)	800	(1760)	110	(3.9)



RF576



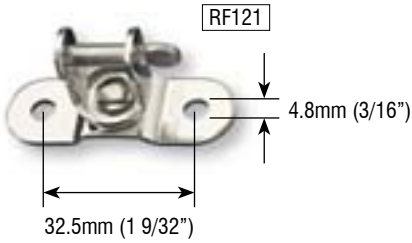
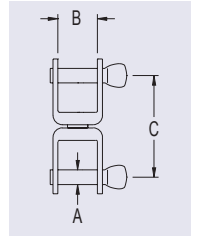
RF120



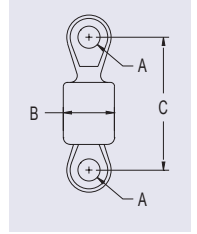
RF173



RF75



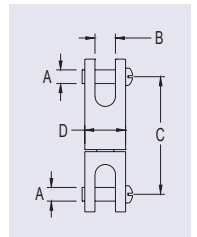
RF121



RF78



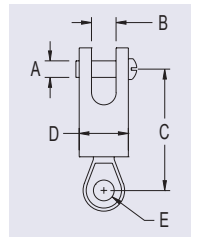
RF78B



RF78A



RF79



Swivels are used in conjunction with blocks, and rigging systems to provide articulation and rotation. (not suitable for high speed rotating applications)

Ball bearing swivels have lower friction and higher working loads than non-ball bearing versions.

Breaking loads for some swivels are given for two load situations:

\* UDL refers to a Uniformly Distributed Load across the full width of the pin.

\*\* PL refers to a Point Load applied at the centre or at one end of the pin.

\*\*\* RF78 & RF78B have Eye Thickness = 6.4mm (1/4")

### MATERIALS

- Grade 316 Stainless Steel bodies and pins

PRODUCT No.	A mm	A (in.)	B mm	B (in.)	C mm	C (in.)	*UDL B.L. kg	*UDL B.L. (lb)	**PL B.L. kg	**PL B.L. (lb)	WEIGHT g	WEIGHT (oz)		
<b>Swivels</b>														
RF576	4.0	(5/32)	10	(13/32)	22	(7/8)	500	(1100)	350	(770)	10	(0.4)		
RF120	4.8	(3/16)	12	(15/32)	32	(1 1/4)	650	(1430)	650	(1430)	20	(0.7)		
RF173	6.4	(1/4)	15	(19/32)	42	(1 5/8)	1100	(2420)	700	(1540)	40	(1.4)		
RF121	4.8	(3/16)	12	(15/32)	-	-	650	(1430)	-	-	15	(0.5)		
PRODUCT No.	A mm	A (in.)	B mm	B (in.)	C mm	C (in.)	D mm	D (in.)	E mm	E (in.)	B.L. kg	B.L. (lb)	WEIGHT g	WEIGHT (oz)
<b>Swivels – Ball Bearing</b>														
RF75	7.9	(5/16)	17.0	(21/32)	60	(2 3/8)	-	-	-	-	2100	(4620)	80	(2.8)
RF78***	8.2	(5/16)	19.0	(3/4)	49	(1 15/16)	-	-	-	-	1000	(2200)	65	(2.3)
RF78A	6.4	(1/4)	9.5	(3/8)	53	(2 3/32)	19.0	(3/4)	-	-	1700	(3740)	80	(2.8)
RF78B***	6.4	(1/4)	9.5	(3/8)	48	(1 7/8)	19.0	(3/4)	8.2	(5/16)	1700	(3740)	60	(2.1)
RF79	7.9	(5/16)	12.0	(15/32)	88	(3 15/32)	25.4	(1)	16.0	(5/8)	2600	(5720)	215	(7.6)



### FEATURES

- ▶ Padeyes are available to suit a wide range of load requirements.
- ▶ Removable screw-in padeyes are ideal for attaching blocks which may be removed when not in use or while cruising. A threaded plug remains in the base section when the top plate is removed to prevent dirt and grit from entering the threads.
- ▶ A dust cover prevents sand from entering the thread when the male section is removed.
- ▶ S-hooks feature a closed eye and long return leg to ensure a positive attachment and avoid accidental release.

### MATERIALS

- ▶ Grade 316 stainless steel.
- ▶ Duplex SD100 stainless steel (RF2429).

PRODUCT No.		A		B		C		D		B.L.		WEIGHT	
		mm	(in.)	mm	(in.)	mm	(in.)	mm	(in.)	kg	(lb)	g	(oz)
<b>Padeyes</b>													
RF2429	Padeye	71	(2 13/16)	10	(13/32)	8	(5/16)	19	(3/4)	9000	(19840)	220	(7.8)
RF2432-09	Padeye	55	(2 5/32)	6	(1/4)	9	(11/32)	14	(9/16)	4000	(8820)	105	(3.7)
RF2432-10	Padeye	72	(2 27/32)	8	(5/16)	10	(13/32)	19	(3/4)	5000	(11020)	190	(6.7)
RF2432-12	Padeye	85	(3 11/32)	10	(13/32)	12	(15/32)	22.5	(7/8)	6000	(13230)	390	(13.8)
RF2432-16	Padeye	100	(3 15/16)	12	(15/32)	16	(5/8)	30	(1 3/16)	9000	(19840)	580	(20.5)
RF2433-09	Padeye, removable	55	(2 5/32)	6	(1/4)	9	(11/32)	14	(9/16)	4000	(8820)	285	(10.1)
RF2433-10	Padeye, removable	72	(2 27/32)	8	(5/16)	10	(13/32)	19	(3/4)	5000	(11020)	550	(19.4)
RF2433-12	Padeye, removable	85	(3 11/32)	10	(15/32)	12	(15/32)	22.5	(7/8)	8000	(17640)	1025	(36.2)
RF2433-16	Padeye, removable	100	(3 15/16)	12	(15/32)	16	(5/8)	30	(1 3/16)	9000	(19840)	1980	(69.8)
RF2450	Padeye, block adaptor, 4.7mm (3/16")	51	(2)	75	(2 31/32)	-	-	-	-	1135	(2500)	77	(2.7)
<b>Beckets</b>													
RF1050	Eye becket	-	-	5	(3/16)	9	(11/32)	8	(5/16)	-	-	6	(0.2)
RF1051	Eye becket	-	-	6	(1/4)	9	(11/32)	8	(5/16)	-	-	6	(0.2)
RF1052	Fork becket	11.5	(7/16)	5	(3/16)	5	(3/16)	4.4	(3/16)	-	-	9	(0.3)
RF1053	Fork becket	14	(9/16)	6	(1/4)	5	(3/16)	5.5	(7/32)	-	-	9	(0.3)
<b>S-hooks</b>													
RF48A		10	(13/32)	9	(11/32)	62	(2 7/16)	6	(1/4)	400	(880)	35	(1.2)
RF49		12	(15/32)	11	(7/16)	76	(3)	8	(5/16)	600	(1320)	65	(2.3)
R50		10	(13/32)	6.8	(9/32)	44	(1 23/32)	4.8	(3/16)	250	(550)	14	(0.5)
RF51		15	(19/32)	16	(5/8)	87	(3 7/16)	9.5	(3/8)	800	(1760)	110	(3.9)



<p><b>FEATURES</b></p> <ul style="list-style-type: none"> <li>▶ Stainless steel springs are used to keep blocks in an upright position and off the deck.</li> </ul>	<ul style="list-style-type: none"> <li>▶ Saddles are available in standard and flared versions.</li> <li>▶ Convenient for lashing points and attaching control line leads or blocks.</li> </ul>	<p><b>MATERIALS</b></p> <ul style="list-style-type: none"> <li>▶ Grade 316 stainless steel.</li> </ul>
---	---	--

PRODUCT No.		A mm (in.)	B mm (in.)	C mm (in.)	D mm (in.)	B.L. kg (lb)	WEIGHT g (oz)	
<b>Saddles - Narrow</b>								
RF134	Saddle	36.5 (1 7/16)	5 (3/16)	4.8 (3/16)	14 (9/16)	-	5 (0.2)	
RF134A	Saddle, countersunk holes	36.5 (1 7/16)	5 (3/16)	4.8 (3/16)	14 (9/16)	-	5 (0.2)	
RF498	Saddle	27 (1 1/16)	4 (5/32)	3.5 (1/8)	10 (13/32)	-	4 (0.1)	
RF528	Saddle	44 (1 23/32)	8 (5/16)	7 (9/32)	12 (15/32)	-	25 (0.9)	
RF1054	Saddle	60 (2 3/8)	8 (5/16)	5.5 (7/32)	18 (23/32)	-	35 (1.2)	
RF1055	Saddle	45 (1 25/32)	6 (1/4)	7 (9/32)	16 (5/8)	-	15 (0.5)	
<b>Saddles - Flared Top</b>								
RF94	Saddle, flared top	27.5 (1 3/32)	5 (3/16)	9 (11/32)	6 (1/4)	-	3 (0.1)	
RF94A	Saddle, flared top	40 (1 9/16)	5 (3/16)	6 (1/4)	5 (3/16)	-	3 (0.1)	
RF148	Saddle, flared top	41 (1 5/8)	6 (1/4)	12 (15/32)	15 (9/32)	-	8 (0.3)	
RF291	Saddle, flared top	32 (1 1/4)	5 (3/16)	9 (11/32)	13 (1/2)	-	7 (0.2)	
RF5013	Saddle, flared top	38 (1 1/2)	5 (3/16)	12.5 (1/2)	15 (19/32)	-	8 (0.3)	
RF5023	Saddle, flared top	51 (2)	6 (1/4)	14 (9/16)	21 (13/16)	-	11 (0.4)	
<b>Springs</b>								
RF318	Tapered, 22mm (7/8") high x 16.5 (21/32") diameter. 1.2mm (1/16") material diameter.							3 (0.1)
RF319	32mm (1 1/4") high x 20mm (25/32") diameter. 2mm (3/32") material diameter.							3 (0.1)
RF320	29mm (1 5/32") high x 28mm (1 3/32") diameter. 2.9mm (1/8") material diameter.							15 (0.5)
RF321	Tapered. 40mm (1 9/16") high x 28mm (1 3/32") diameter. 2mm (3/32") material diameter.							9 (0.3)
RF322	Tapered. 31mm (1 7/32") high x 28mm (1 3/32") diameter. 1.6mm (1/16") material diameter.							5 (0.2)
RF324	Tapered, 75mm (2 31/32") high x 60mm (2 3/8") diameter. 3.5mm (1/8") material diameter.							80 (2.8)
RF325	Tapered, 110mm (4 11/32") high x 85mm (3 11/32") diameter. 4mm (5/32") material diameter.							180 (6.3)
RF326	44mm (1 23/32") high x 33mm (1 5/16") diameter. 2mm (3/32") material diameter.							15 (0.5)